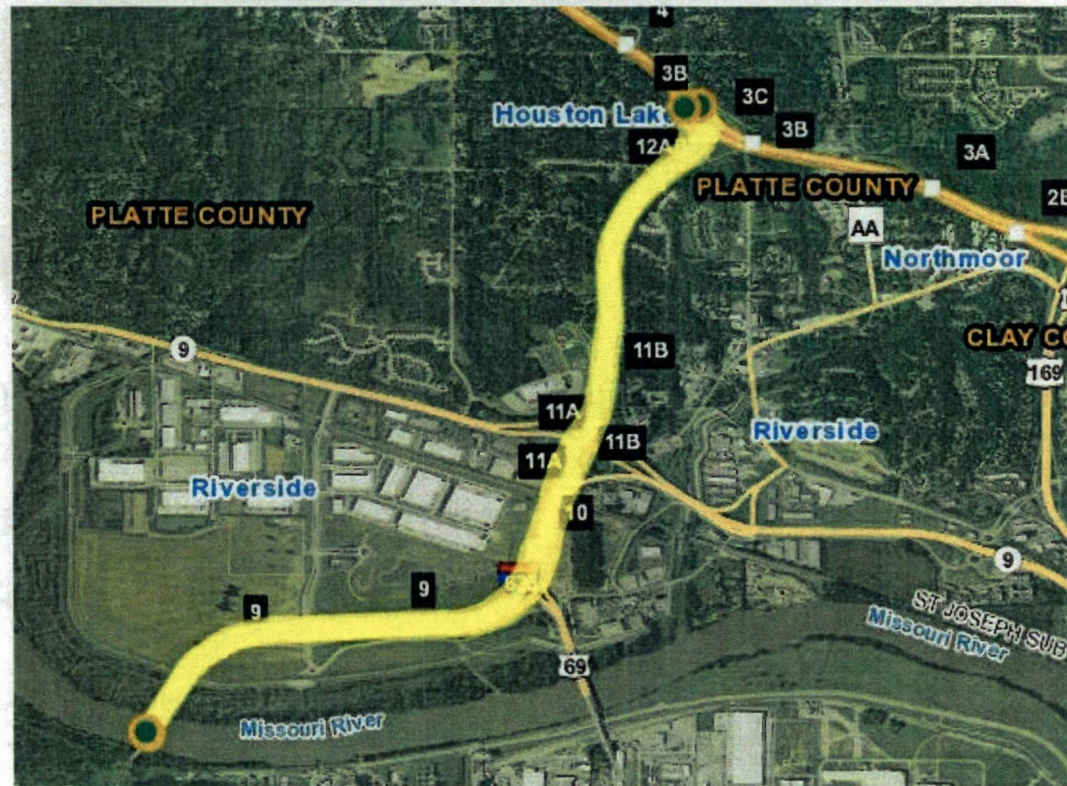


# Route: I-635



- **County:** Platte
- **Project Number:** J4I3331
- **Improvements:** Pavement resurfacing from I-29 to the KS state line.
- **Award Date:** Fall 2021





## Rte. 152 at N. Platte Purchase Dr.



- **Improvements:** Convert interchange to DDI
- **Completion Date:** Summer 2022
- **Traffic Impacts:** Intermittent lane reductions on N. Platte Purchase





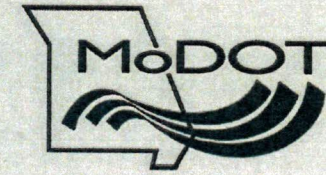


## I-29 Multiple Bridge Replacement Project

- **Improvements:** Replace the I-29 Bridges over 56th St. & Waukomis Drive Bridge
- **Completion Date:** End of 2023
- **Traffic Impacts:** Major traffic impacts & detours, 56<sup>th</sup> St. Bridge work this year (2 lanes open each direction), 56<sup>th</sup> Closed



# Route: I-29/I-35/I-435



- **County:** Platte & Clay
- **Project Number:** J4I3087
- **Improvements:** Corridor study from Rte. 45 to Rte. 210 in Kansas City. Includes I-35 from I-435 to Rte. 210 and Rt
- **Award Date:** Completion expected in 2023

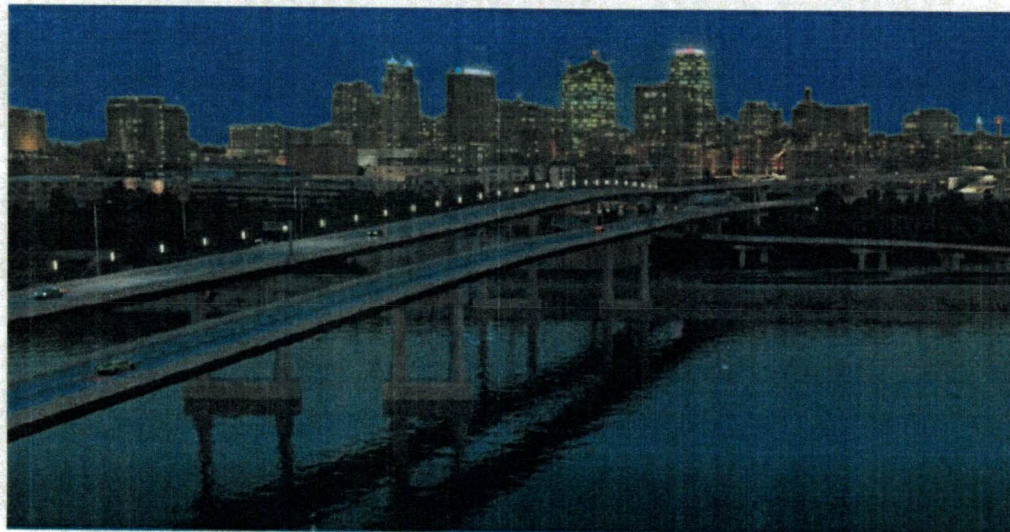




# 169 Buck O'Neill Bridge Over the Missouri River

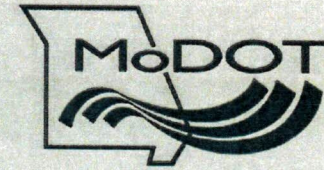


- **Improvements:** New bridge
- **Completion Date:** End of 2024
- **Traffic Impacts:** NB US 169 will remain open throughout entire project. However, SB US 169 will be closed beginning sometime in 2023 for approx. 616 days to accommodate construction on the north side of the river

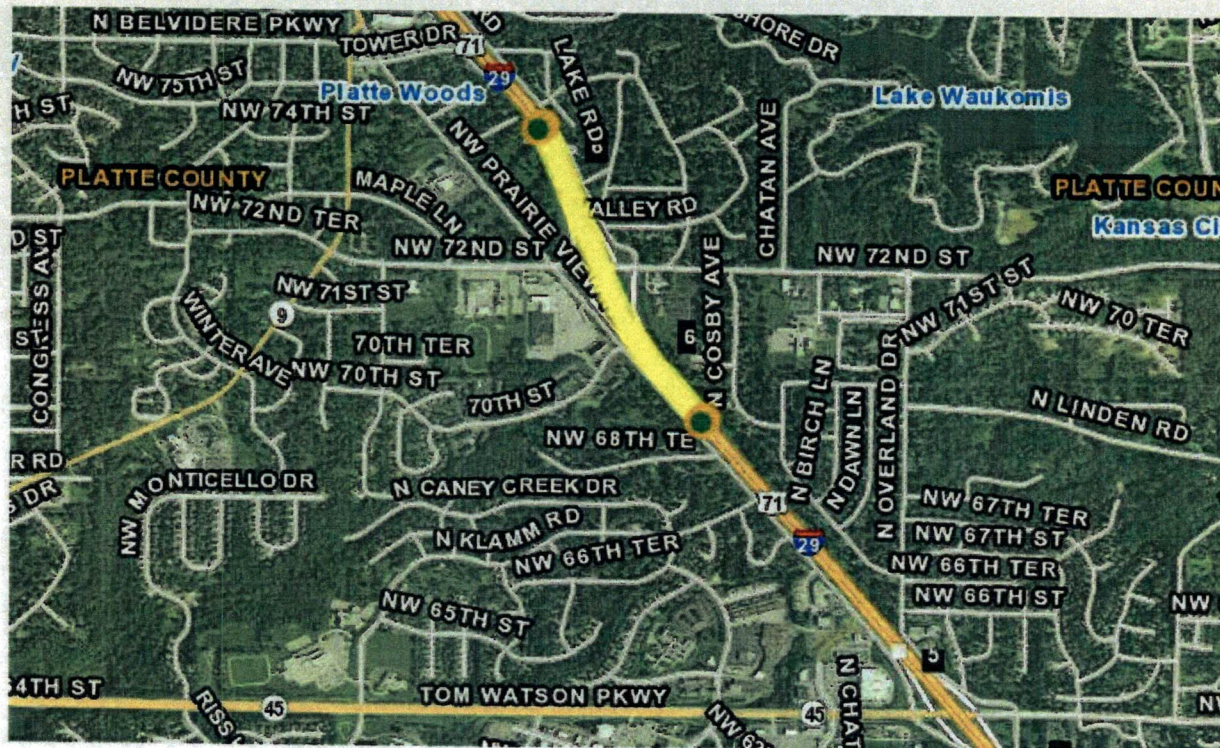




# Route: I-29



- **County:** Platte
- **Project Number:** J4I3450
- **Improvements:** Bridge replacement over NW 72<sup>nd</sup> St.
- **Award Date:** 2023





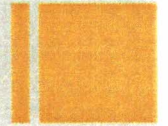
# Gas Tax Increase



- The legislature and the Governor raised the gas tax **for the first time since 1996.**
- Increases the state motor fuel tax beginning with **2.5 cents in October 2021** and increasing by 2.5 cents on July 1 each fiscal year until reaching **an additional 12.5 cents per gallon** on July 1, 2025.
- When fully implemented, **Missouri's state gas tax will be 29.5 cents (17 +12.5)** in 2025.
- A refund on this new increase would be available for all individuals who apply for one, exempting motor vehicles weighing greater than 26,000 pounds (administered by Dept. of Revenue).



# Gas Tax Increase (continued)



- The current STIP is \$1.105 billion in projects a year including purchasing of property and construction contract amounts. When the full 12.5 cents are added in 2025, the annual program will include roughly **another \$350 million per year** for state projects.
- In total, the additional 12.5 cents, will generate approximately \$500 million a year for state and local projects. **Cities and counties receive approximately 15% each of the total revenue to be used on the local transportation system.** There is also a 3% cost for collection of the revenue.
- Missouri has the **seventh largest state transportation system and previously ranked as the 45<sup>th</sup> lowest available revenue per mile.**
- Based on the current amounts of other state's gas taxes, three of the eight states Missouri touches will continue to have a higher gas tax after this increase is complete in 2025. Those states are Illinois, Iowa and Nebraska.



# Highway Safety




- Through the KC District MO Coalition for Roadway Safety, we have provided years of grant money to fund Platte County Health Department in support of their **BUCKLE UP KIDS AND ARRIVE ALIVE** educational programs.
- Grant application questions – direct to Debra Huwar.  
816 607 2187



**OCTOBER 22**  
**BUCKLE UP PHONE DOWN DAY**

**BUCKLE UP**  
**PHONE DOWN**

**Take the Pledge**

 [savemolives.com](http://savemolives.com)

Show your support by taking the pledge or picking up a yard sign to put in your yard or place of business.  
Contact Deb Huwar at [Debra.Huwar@modot.mo.gov](mailto:Debra.Huwar@modot.mo.gov) for signs.

 [www.savemolives.com](http://www.savemolives.com) 

The image shows a promotional sign for 'October 22 Buckle Up Phone Down Day'. The sign has a blue border and a white background. At the top, it says 'OCTOBER 22' in large orange letters and 'BUCKLE UP PHONE DOWN DAY' in blue letters below it. In the center, there is a graphic with a blue arrow pointing up containing the text 'BUCKLE UP' and a red arrow pointing down containing the text 'PHONE DOWN'. To the right of this graphic, it says 'Take the Pledge' in white text on a blue background. Below this, there is a QR code and the website 'savemolives.com'. At the bottom of the sign, there is a small instruction: 'Show your support by taking the pledge or picking up a yard sign to put in your yard or place of business. Contact Deb Huwar at Debra.Huwar@modot.mo.gov for signs.' The bottom of the sign features a small version of the 'BUCKLE UP PHONE DOWN' sign, the website 'www.savemolives.com', and the MoDOT logo.